



EXPERIENCE
COLOR
CAPTURE ATTENTION

The **LOOK** Company®

CAPTURE SHOPPERS ATTENTION WITH COLOR

Communicate your brand message and engage your customers with an elevated in-store experience. The Look Company offers a wide range of innovative visual engagement solutions for retail applications.



The
LOOK
Company

RETAIL SOLUTIONS

Lightboxes

Modular Display Systems

Integrated Fixtures

Wall-Mounted Graphic Treatments & Signage

Wayfinding & Department Signage

Services



LIGHTBOXES

Our lightboxes are available in a wide range of sizes to meet every need, from space-saving slim designs to seamless corner lightboxes.

LIGHTBOX SOLUTIONS

- ✓ 50mm (2") One-sided, Backlit
- ✓ 50mm (2") Rounded Corner, Backlit
- ✓ 50mm (2") Seamless Corner, Backlit
- ✓ 75mm (3") One-sided, Backlit
- ✓ 100mm (4") One-sided, Perimeter Lit
- ✓ 100mm (4") One-sided, Backlit
- ✓ 120mm (4.5") Two-sided, Perimeter Lit
- ✓ 120mm (4.5") One or Two-sided Corner, Perimeter Lit



NEXT GENERATION LED LIGHTING SYSTEM

Our Next Generation LED system is available in all of our lightbox product offerings in either backlit or perimeter for double-sided or corner lightboxes.

THE NEXT GENERATION LED AND POWER SUPPLY FEATURES:

- ✓ High color rendering index (CRI), providing a true white light source
- ✓ 4 Watts per sq. ft. power consumption - 60% less compared to our first generation LEDs
- ✓ Life expectancy - 100,000 hrs
- ✓ Universal input from 100-240 volts AC, 50/60 Hertz
- ✓ UL listed product



The
LOOK
Company



THE THINNEST BACKLIT LIGHTBOX ON THE MARKET JUST GOT BETTER!

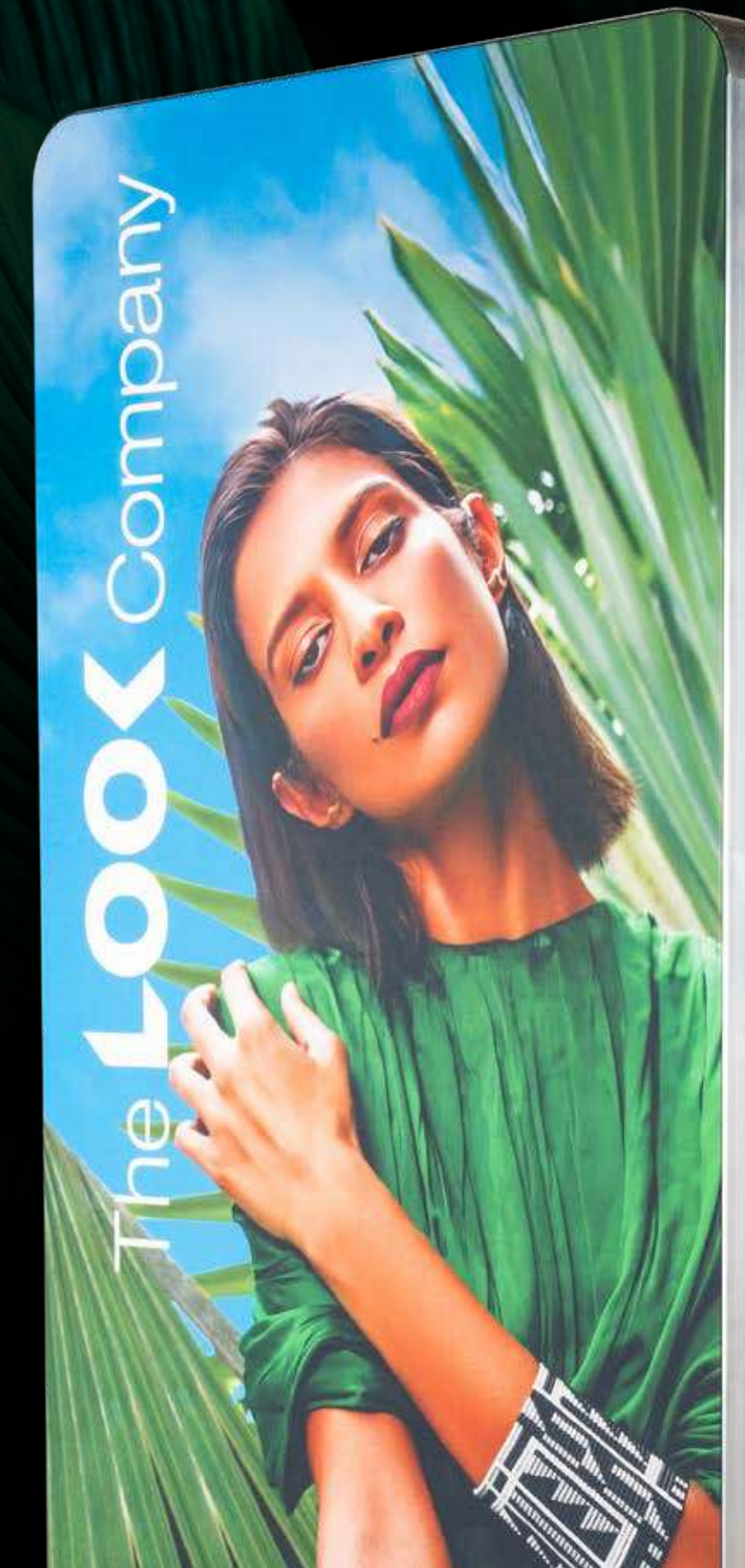
Our 50mm (2") frame is customizable for a wide range of applications. The thinner profile allows lightboxes to be wall-mounted or integrated into display systems where space is at a premium.



Push your design aesthetic to new dimensions with new innovations for the 50mm (2") backlit lightbox.

Seamless Corner Backlit Lightbox

The 50mm (2") seamless corner backlit lightbox provides 360° continuous graphics that can be seen at any angle. Incorporate seamless lightboxes wrapped around pillars or hung from the ceiling for wayfinding applications.



Backlit Lightbox with Rounded Corners

Integrate rounded corners into wall-mounted, self-standing and hanging 50mm (2") lightbox applications.



MODULAR DISPLAY SYSTEM

Our Modular Display System can be easily constructed into any configuration to create a custom graphic display.

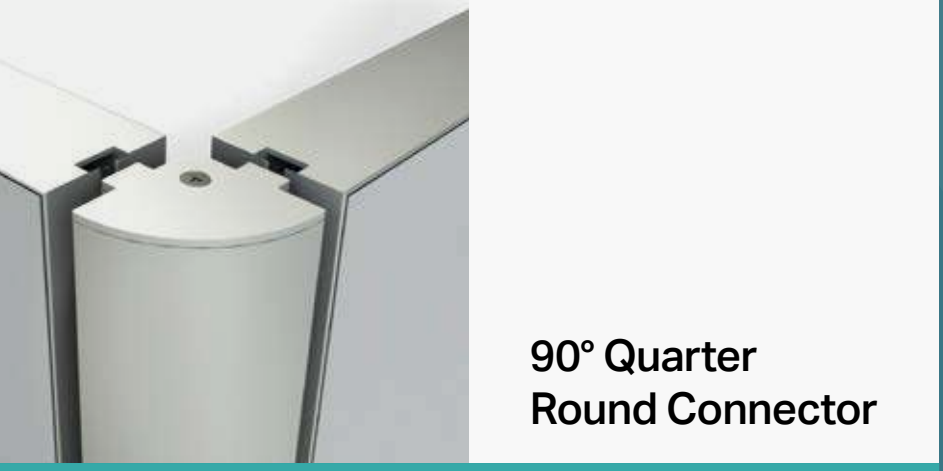
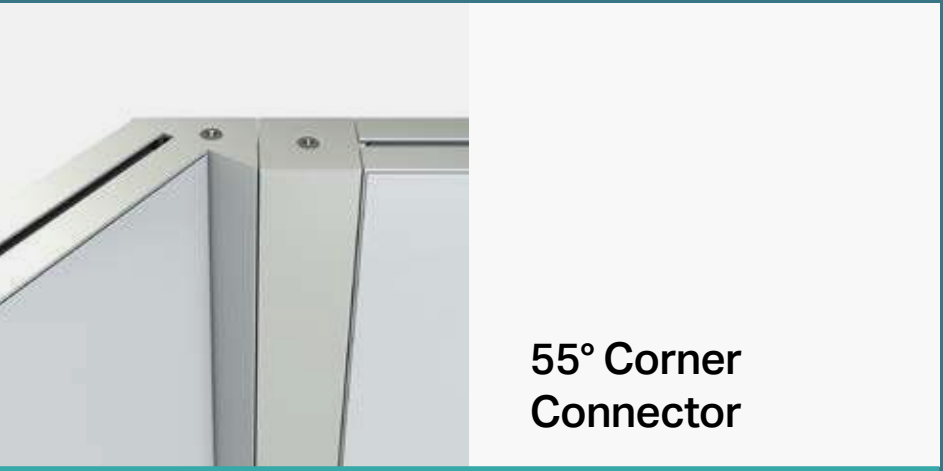
Modular Display Features

- ✓ Reusable - can be easily reconfigured for multiple uses
- ✓ Turnkey - easy to build, no skilled labor required
- ✓ Lightweight, freestanding and moveable
- ✓ Customizable graphics - can be changed in minutes



MODULAR CONNECTORS

The Look Company's Modular Connectors provide unlimited design flexibility. Easily connect panels together with the use of connectors to create custom graphic display solutions.



INTEGRATED FIXTURES

Working with existing fixtures, we can retrofit units to accommodate seamless fit graphics that are integrated within standalone product display hardware.

Extend your messaging above fixtures with fins, toppers, or custom projecting extrusions. We offer a full range of integration brackets that can be mounted to most existing store fixtures.



WALL MOUNTED GRAPHICS TREATMENTS & SIGNAGE

A low-profile frame anchored directly to the wall surface provides a versatile graphic system that can be constructed to any shape and size.

Half-wall to full-wall treatments or top-of-shelf runners can be easily anchored to the wall in any size with printed fabric graphics to communicate product information or reinforce your brand's message.

The low-profile wall-mounted frame system offers:

- ✓ Most cost-effective way to brand a wall
- ✓ Easy graphic changeouts compared to paint, wallpaper or sticker
- ✓ Lightweight installation - can be installed on the wall with no mess or store downtime



WAYFINDING & DEPARTMENT SIGNAGE

Our extrusion systems are adaptable to create not only wall and floor-mounted pieces, but can also be used to form ceiling-hung identification and directional wayfinding signs.

Using our lightweight frame and fabric system, displays can be large-scale and hung by standard cables along ceiling rafters. Built-in fasteners provide precise leveling for future adjustments.

More 
Upstairs

2ND FLOOR

Apparel
Bikes & Exercise
Camping
Electrical
Furniture
Home Comfort
Lighting

Outdoor Store
Paint
Patio & BBQ/Christmas
Plumbing
Sports
Storage
Tools & Hardware



The
LOOK
Company

SERVICES

We offer a full range of integrated services from in-house design to project management and installation.

Concept Development

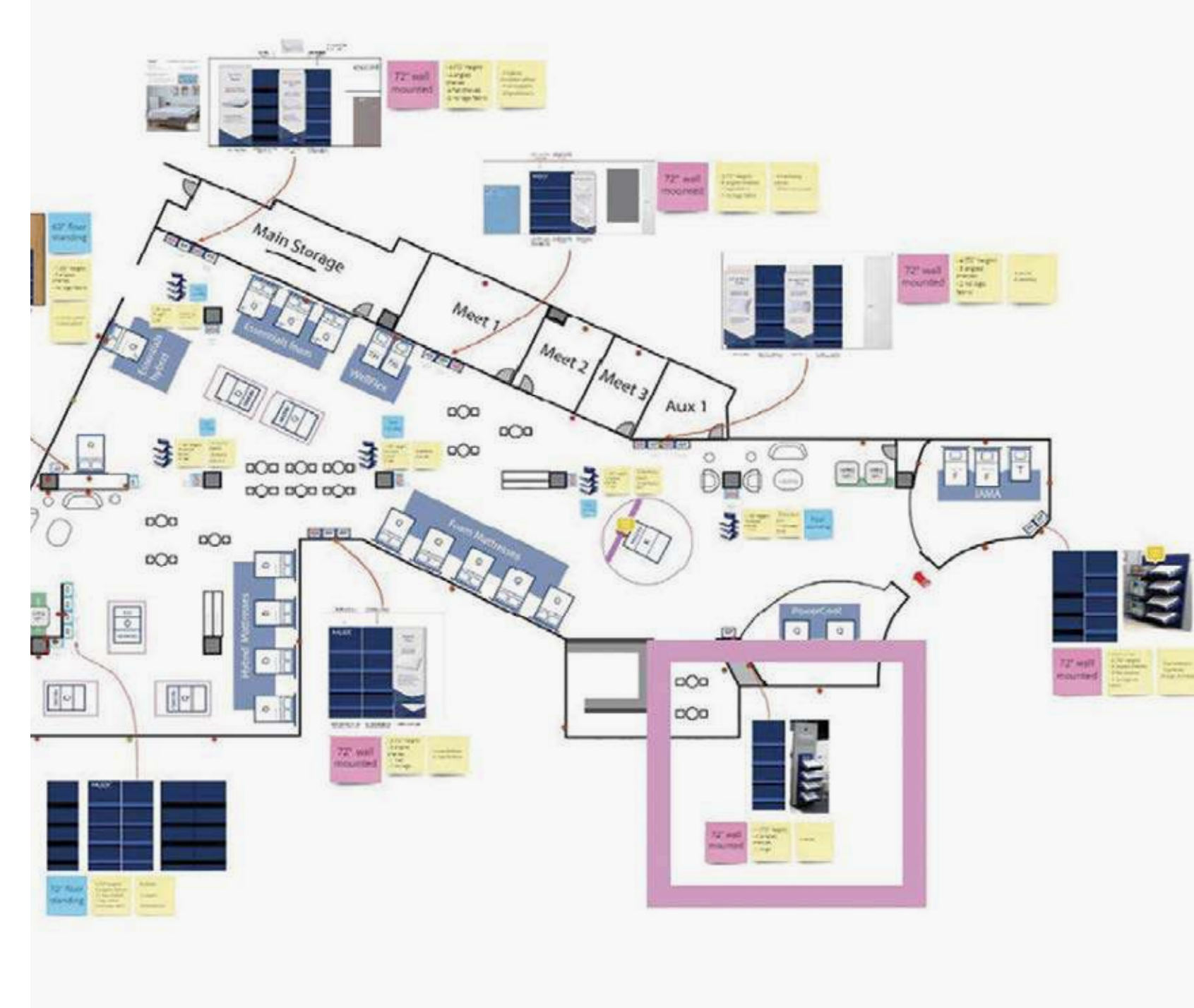
Our concept development team are seasoned experts in crafting unique brand solutions for both retail and sport environments.

- ✓ Ideation process
- ✓ Visualization planning
- ✓ Stakeholder collaboration

Design & Planning

Our designers audit your space and recommend the best solutions to engage your audience and elevate your brand's experience.

- ✓ Creative design
- ✓ Location plan drawings
- ✓ Product design & prototyping
- ✓ Technical CAD shop drawings



Project Management & Installation

Our dedicated project managers are located on site at our manufacturing facilities. They can coordinate the entire project from start to finish to ensure quality deliverables, on-time and at scale.

Installation services

- ✓ Network of experienced installers
- ✓ Anywhere across North America
- ✓ Installation instructions and videos

- ✓ Scoping & surveying
- ✓ Engineering
- ✓ Stakeholder liaison
- ✓ Designated project manager assigned to your account
- ✓ Digital content management system
- ✓ Campaign management platform

4.2 million sq. ft.
of digital printing
2020

3.3 million linear feet
of kedar finishing
2020

2.3 million linear
feet of extrusion
frame
2020



BUILDING A SUSTAINABLE FUTURE

At The Look Company, we are working hard to provide our customers with [sustainable products and services](#) to support green initiatives. Our commitment to sustainability spans from the raw materials we choose to the production processes we follow. We are continually looking for new ways to lessen our environmental impact to pass down a better world to future generations.

In 2023, The Look Company received a gold from FESPA in the Roll-To-Roll Printed Textiles category with special recognition of the first-ever Sustainability Award for their work for the FIFA World Cup Qatar 2022™. Sustainability was a top priority for the FIFA World Cup Qatar 2022™ organization, host city and affiliates.

[Learn more about our part in delivering a sustainable FIFA World Cup](#)



The
LOOK
Company

**THE LOOK COMPANY
PARTNERS WITH BRANDS
AROUND THE WORLD
TO BUILD UNIQUE AND
INNOVATIVE BRAND
EXPERIENCES. WHEN YOU
PARTNER WITH US, YOU'RE IN
GOOD COMPANY.**

SAMSUNG



Walmart

SPORT CHEK



ROOMS
TO GO

LCBO

Milwaukee



HOLT RENFREW



Indigo

Carlsberg

GUESS

Kroger

MOLSON

SKECHERS

ROGERS



BIRKENSTOCK
MADE IN GERMANY • TRADITION SEIT 1774

ecco

ESTÉE
LAUDER
COMPANIES

BAUER

Burlington
coat Factory



Reebok

BIOSTEEL

lululemon athletica



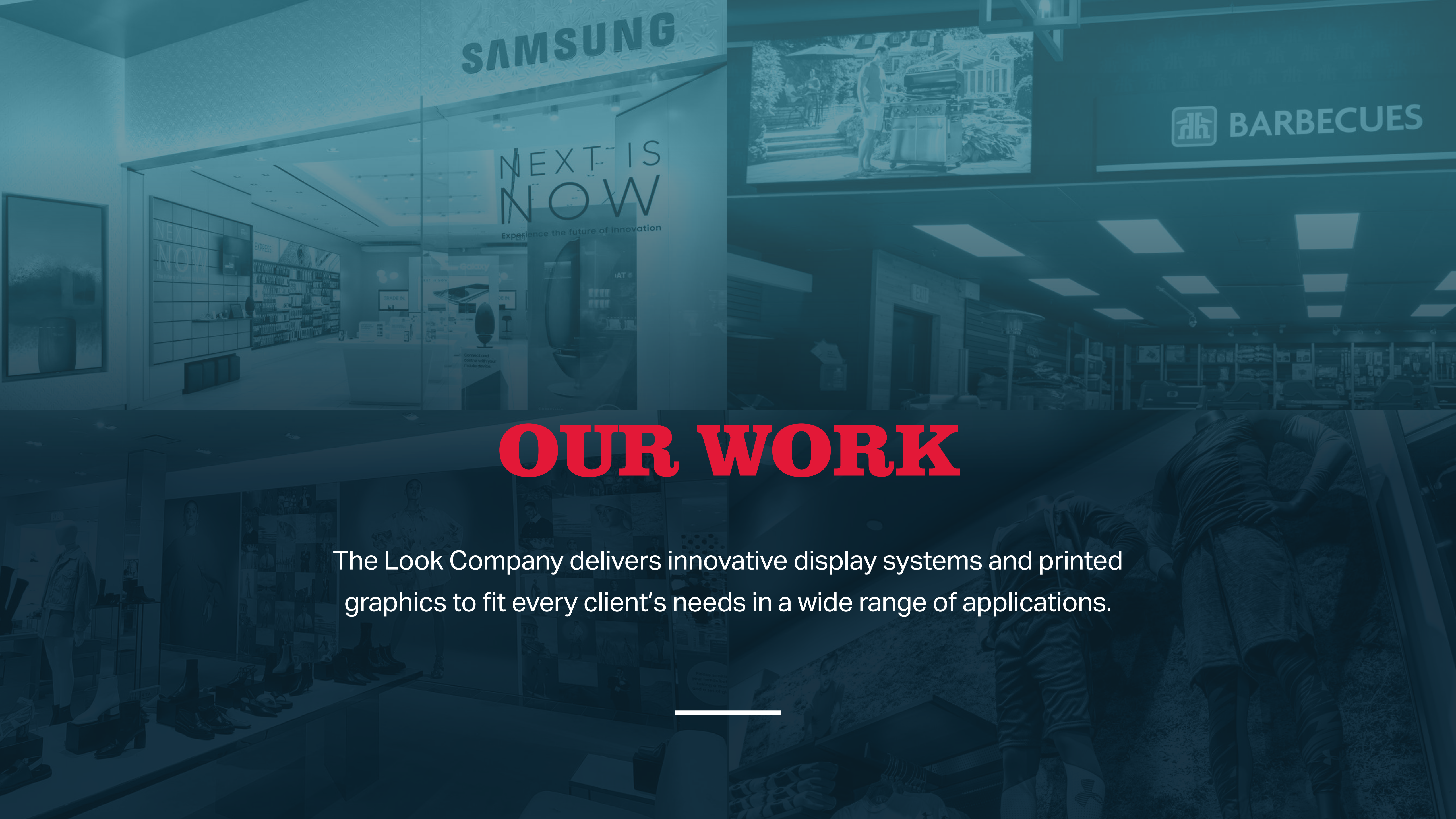
LINCOLN

TaylorMade



MATTRESS FIRM





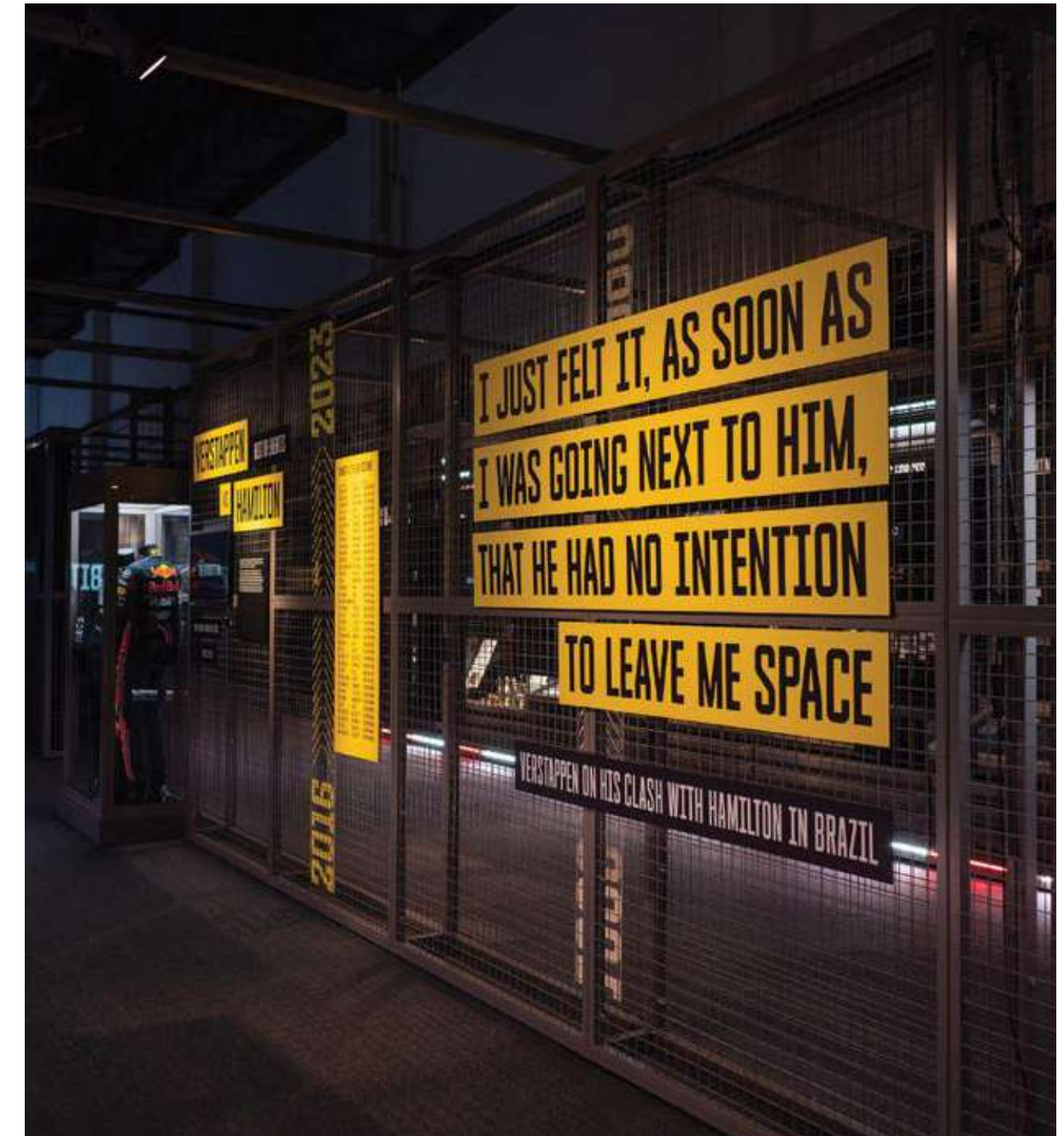
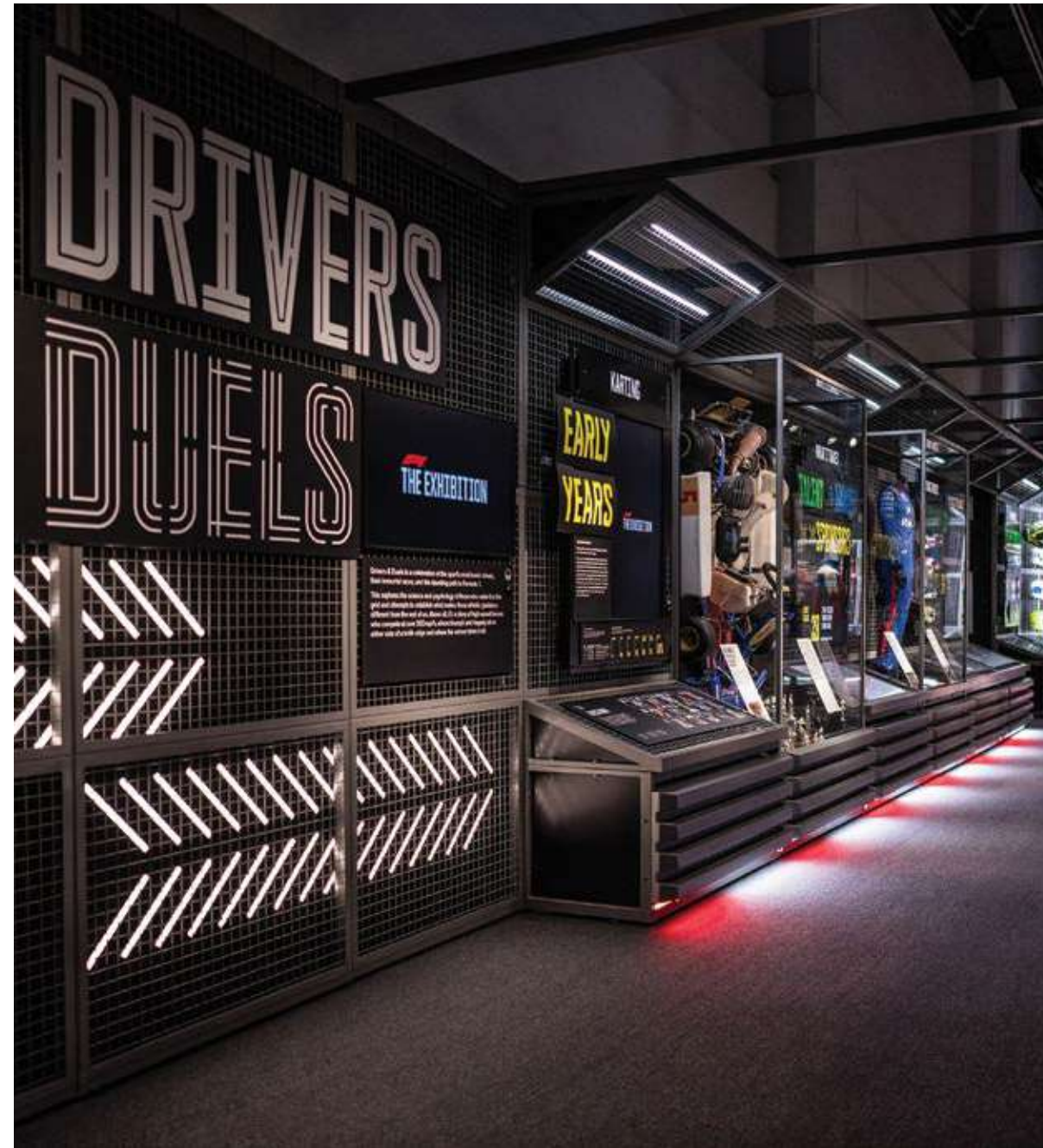
OUR WORK

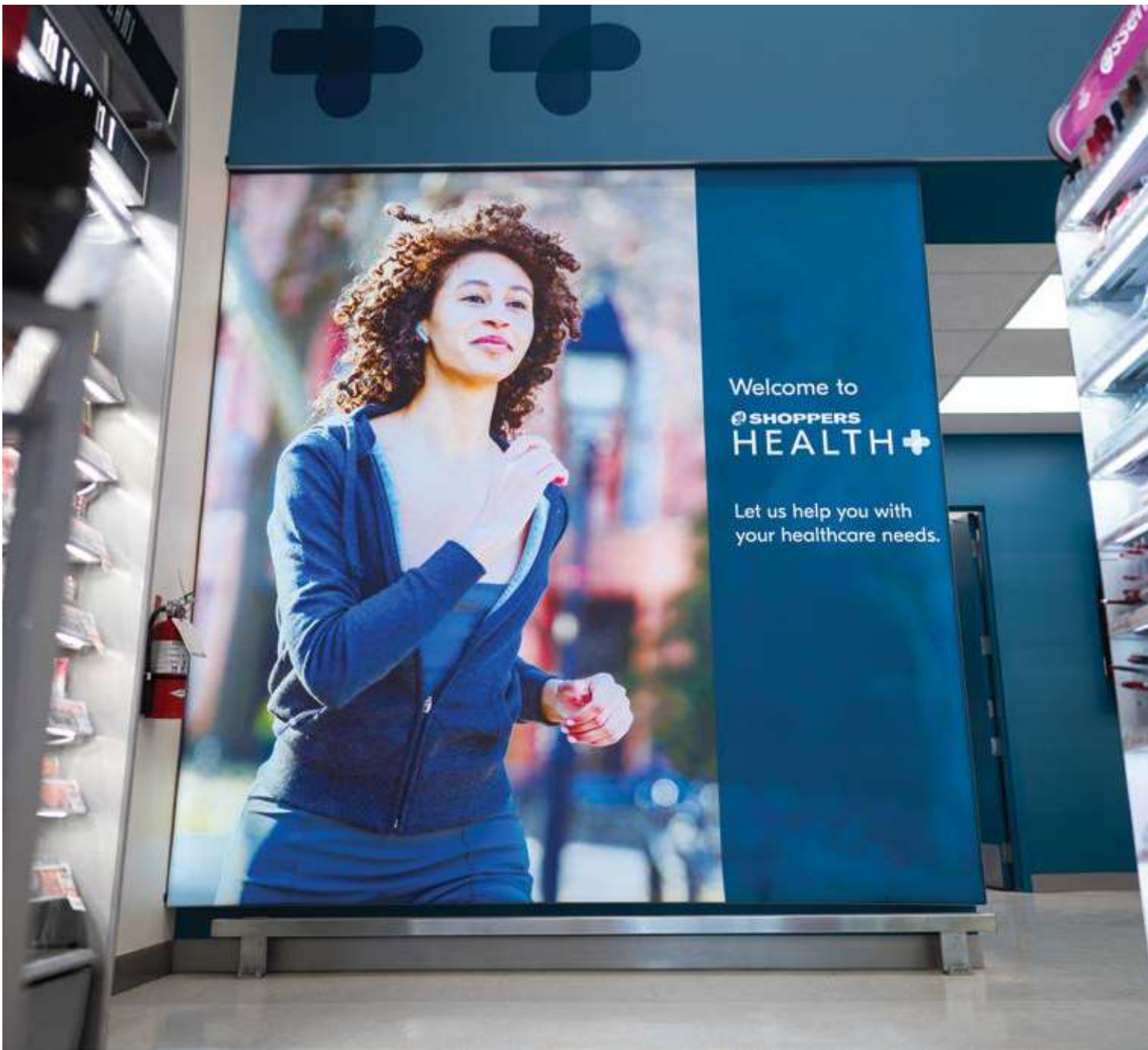
The Look Company delivers innovative display systems and printed graphics to fit every client's needs in a wide range of applications.



THE EXHIBITION TORONTO

Presenting partner
TSN







SKECHERS







HOLT RENFREW



— YOU HAVE THE VISION, —
WE CAN HELP YOU GET THERE

**LET'S GET
STARTED**





**WOULD YOU LIKE A COPY
OF OUR RETAIL SPACES
PRESENTATION?**

The **LOOK** Company®

1.866.979.8326 | thelookcompany.com
Canada • USA • France • Qatar